



2023

Annual Report



Table of Contents

Message from our Co-Founder	3
How Far We've Come	4
Our Impact in 2023	5
Expenses in 2023	6
Story: Leo's recovery from a cat attack	7
Programs & Services	8
Research & Innovation	9
Tavakubu Dog Population Management	10
Story: Saving a Bull's Life & Sight	11
Donors & Fundraisers	12
Reforestation Project	13
Private & Corporate Sponsorships	14
Our Team	15
Story: Goldie Nugget & Battling Paralysis	16
Looking Forward	17
How You Can Help	18
Thanks & Contact Information	19

Message from our Founder

Ni sa Bula Vinaka!

2023 was the first year since COVID-19 that everything almost felt back to 'normal'. It was finally a chance to fully assess all the delays and drastic increase to the dog population due to the 2020 and 2021 lock-downs. It was also an opportunity to start new exciting projects for long-term change, such as our Dog Population Management plan with Lautoka City Council and Ministry of Agriculture in Tavakubu Ward of Lautoka, which included collecting baseline research data and use of ONE-HEALTH policies. In 2023, we implemented some interventions based on that research with more planned for 2024.

It was great to have the most international volunteers we've ever had, thanks to international partners like Vet Projects and Vets Beyond Borders. Volunteers helped our organisation expand our coverage to more Fiji communities. We had over 30 days of outreach clinics this year, beyond our normal operations in our Nadi, Savusavu, Lautoka, and Labasa clinics.

As we start 2024, it is crucial for us to pause and reflect on the 12-year journey of Animals Fiji. This reflection will enable us to understand the challenges ahead and prepare for everything awaiting us in 2024 and beyond. Thank you to each and everyone of you for the support to Animals Fiji and our team!

Thank you, vinaka vaka levu, & dhanyavaad!

Casey | Co-Founder & Managing Trustee



Organisation Background

Animals Fiji is a registered Fiji and U.S. 501(c)(3) charity with a focus on animal welfare. We ensure animal services and education are available to people throughout Fiji. We provide veterinary care for pets, livestock, and wildlife. Our mission is to improve the welfare of all animals - domesticated & wildlife - resulting in better lives for both the animal and humans of Fiji, while helping to build a society without animal cruelty.

Animals Fiji was established in 2011 and have been in operation for over ten years. There are four permanent clinics based in the Western and Northern Divisions of Fiji; in Nadi, Lautoka, Savusavu, and Labasa. In addition to the permanent locations, Animals Fiji performs outreach to communities in Fiji that lack access to veterinary and animal welfare services. The Nadi clinic also has a shelter which takes in stray, injured or abused animals, who are then treated and re-homed.

Animals Fiji is funded exclusively through donations and subsidised treatment fees, with no financial assistance from the Fijian government.

Active Fiji Trustees

Casey Quimby
Amanda Sofield

USA Board

Casey Quimby
Gina Paladini
Amanda Sofield

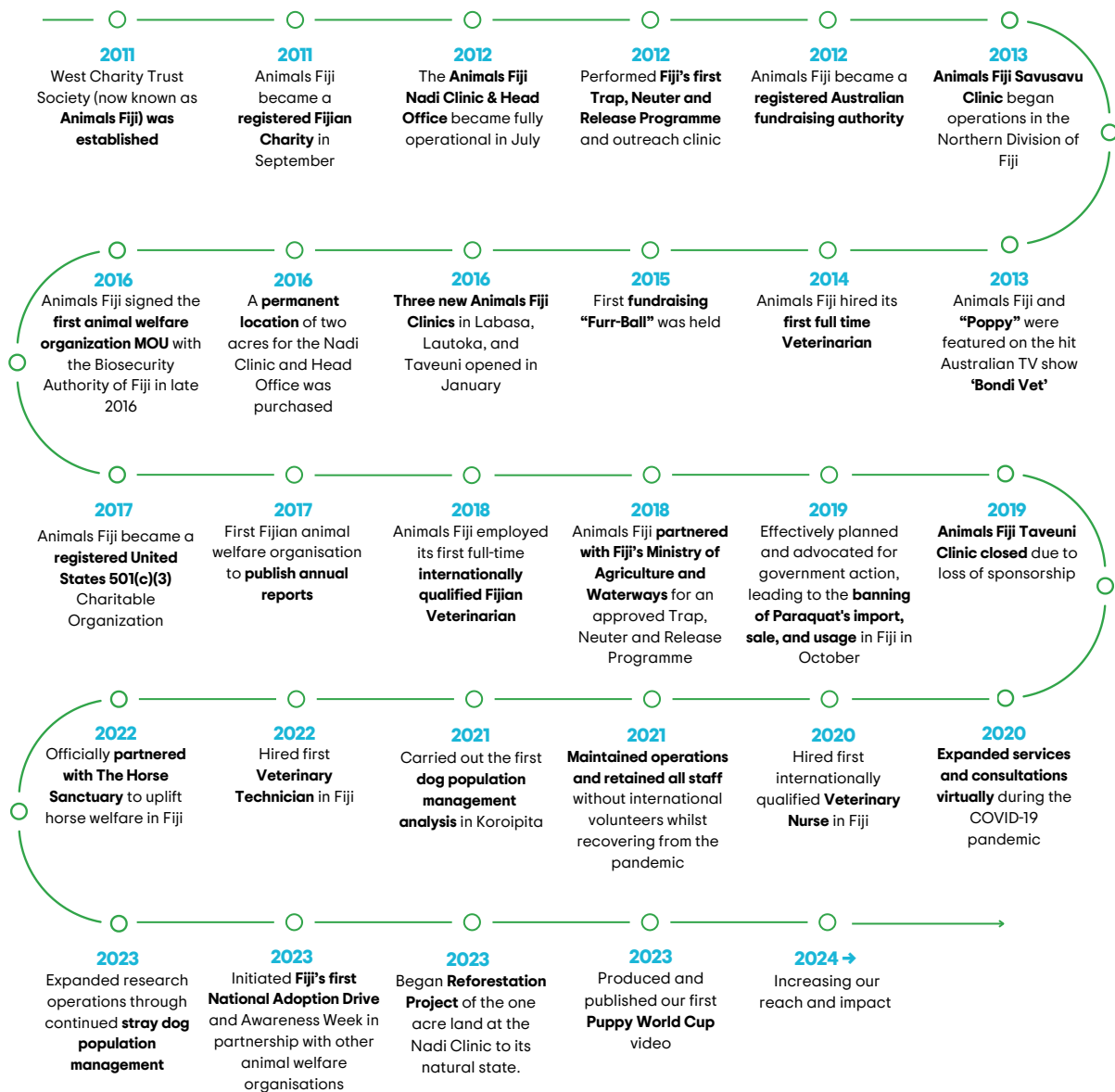
Australian Fundraising Authority

Julie Hoskison

How far we've come



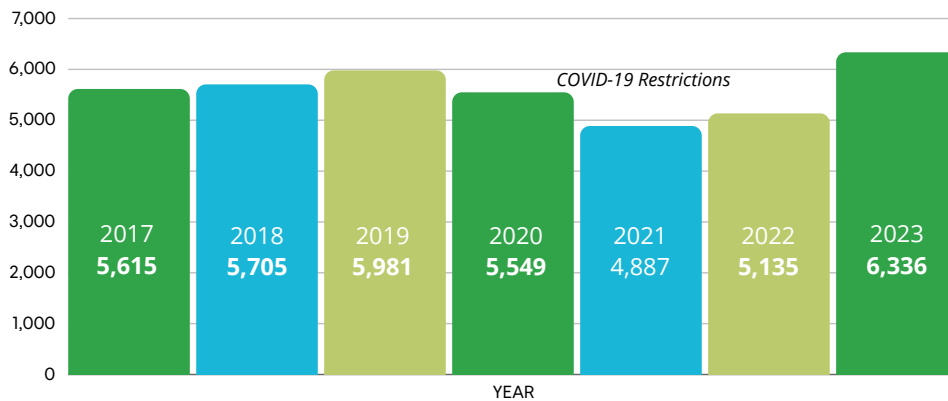
More than just dates, we reflect on the incredible achievements since our establishment. Explore our journey, from rescuing animals to building a compassionate community, and join us in continuing our mission.



Our Impact in 2023



Number of animals helped each year

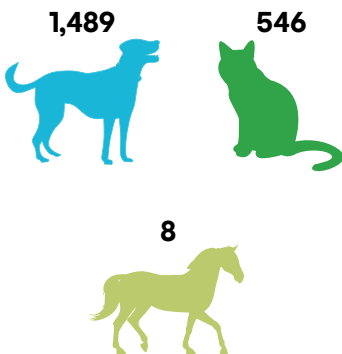


143 animals were adopted from the Nadi shelter

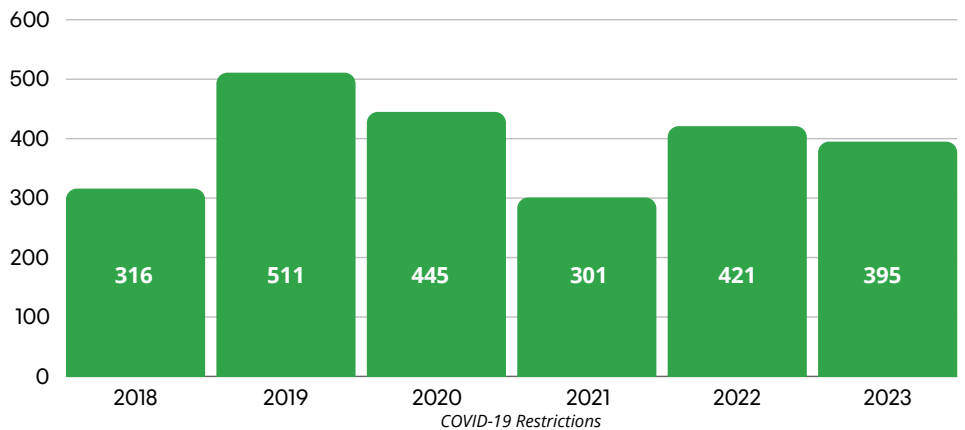


We sent animals to over 17 countries including overseas adoptions and exporting pets ensuring they stay with their loving families

The number of spays & neuters performed



Number of animals surrendered across all four clinics



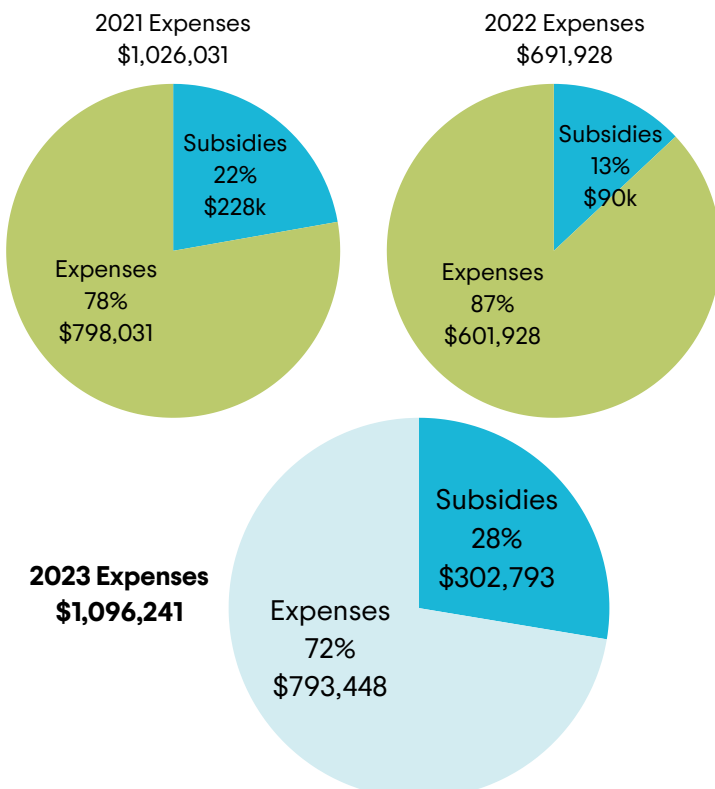
Expenses in 2023



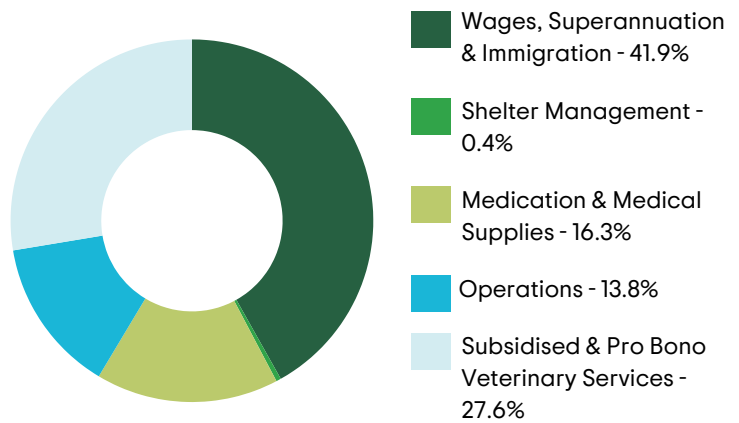
Key Insights

- Despite increasing inflation rates, our expenses have remained relatively stable and we have been able to increase our subsidies. This has meant we have been able to help more animals providing subsidised services to individuals experiencing financial difficulties.
- In 2023, we were able to increase wages for our shelter team for the first time in four years. We continue to act towards remunerating all our staff fairly so they can live sustainably.
- We prioritise outreach clinics through our subsidised services to make a wider-larger scale impact on the stray animal population rather than increasing our shelter capacity
- In alignment with international charity expenditure, the expenses for our programs exceed 75% of total expenditure highlighting our efficiency when maximising fundraising activities and minimising operation expenses.

Expenses per year (FJ\$)



Total Expenses FJ \$1,096,241*



Wages, Superannuation & Immigration

- Immigration Permit costs for international employees
- FNPF (Fiji National Providence Fund) - Superannuation 8% of wages employee contribution and 8% of wages Animals Fiji as the employer contribution
- Also includes casual staff for data collection
- Temporary accommodation for select staff and volunteers

Shelter Management

- Repairs on shelter facilities
- Food for shelter & hospital animals

Medication & Medical Supplies

- Freight & import permit costs
- Domestic & International suppliers
- Vaccines

Operations

- Marketing and communications
- HR services
- Bank fees
- General overheads including power, water, internet, & phones.

Subsidised and Pro Bono Veterinary Services

- Clients experiencing financial limitations
- Subsidies to allow veterinary services to be more accessible
- Animals without owners including shelter animals

*This figure is not a combined value from the funds raised across the Fiji, U.S.A, and Australia charity and/or fundraising authorities.

Leo's recovery fight back against a cat attack



Mid-August on a Sunday, Leo was attacked by a stray, undesexed male cat leading to deadly wounds on his rear legs and tail. When he was brought into our Nadi clinic the day after, our vets found significant fatal swelling, infection, and dying tissue. If left untreated, Leo would not have survived the traumatic injury.



DAY OF ADMISSION



1 WEEK BEFORE GOING HOME

Thankfully, our medical team carefully and meticulously removed the dying tissue and cleaned wounds. Over the next two months, our team monitored, treated, and changed Leo's bandages multiple times daily. He battled through several anesthetics and moments of severe weight loss during his treatment. Equally as important, Leo's owners came in daily, taking time off work, to give tender love and care for him which was a full team effort to aid his recovery (also discovering he loves eating pawpaw!).

After 74 days in our care, including his first birthday, Leo had fully recovered and returned home.

Once home, we received a lovely message sent to us from his owner, Milika saying: "Thank you very much, and Vinaka vakalevu to Team Animals Fiji for your love and care towards Leo. We are truly grateful to the Team for your support towards Leo's recovery. We will be your Advocate and thanks in particular to Dr Ashmita. God Bless you all. ❤️🙏❤️"

Leo is just one example of many that we deal with on a daily basis here at Animals Fiji. Leo's treatment, medications, and daily monitoring over the two months was a minimum of \$2,500FJ, with a significant portion subsidised for his owners thanks to donations our charity receives.



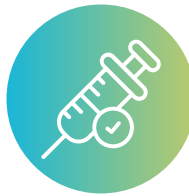
Programs and Services



We are dedicated to enhancing the welfare of animals throughout Fiji by offering a wide range of services designed to provide care, support, and protection for pets, livestock, and wildlife.



Veterinary & Welfare Services
Our veterinary and affordable welfare services include general checkups, emergency triage, life-saving operations, and ongoing hospital care.



Desexing & Vaccinations
We encourage and promote spaying, neutering, and vaccinating client's pets to give them the best chance at a healthy life.



Community Outreach
We perform outreach to deserving communities in Fiji who lack access to veterinary and animal welfare services.



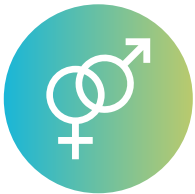
Exports & International Testing
We help families relocate their beloved pets to their new homes abroad whilst upholding global animal welfare standards.



Shelter
We are an Adoption Guaranteed Facility, ensuring lifetime safety, care, and love for shelter animals before they are adopted.



Grooming & Boarding
We offer boarding and grooming services which serve to support our animal welfare and veterinary care subsidies.



Population Management
Our Trap-Neuter and Release programs, data collection, and research into stray animal population management create a better future for animals in Fiji.



Livestock & Farming Consulting
We offer expert consulting services to improve the health and wellbeing of livestock and farm animals.



Education & Awareness
Our education and awareness initiatives empower communities and future generations with knowledge about responsible pet ownership and animal welfare.



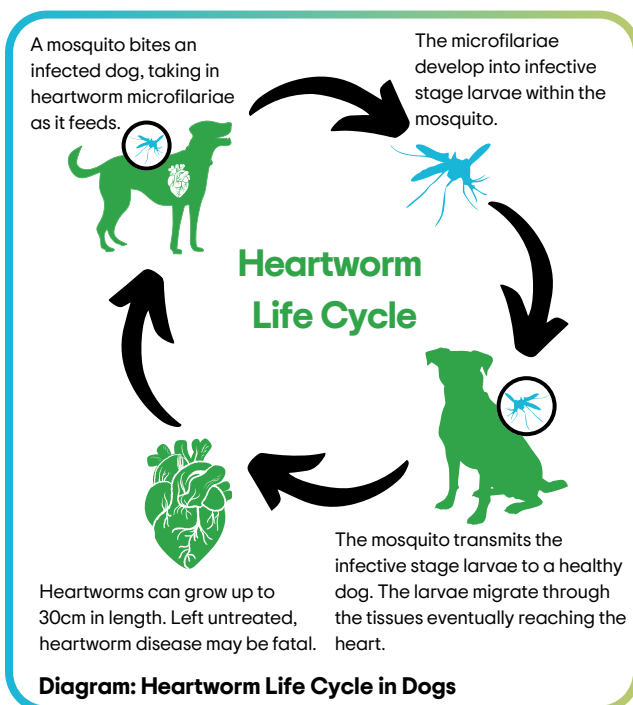
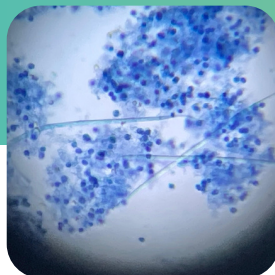
Research & Innovation
We contribute to vital global research efforts aimed at understanding and improving the lives of Fiji animals.

Research & Innovation

Research Library

Animals Fiji's Research initiatives focus on advancing knowledge to improve the lives of animals in Fiji and beyond. We collaborate with researchers, universities, and institutions to conduct studies and gather insights that drive positive change for animals. Through research, we aim to find innovative solutions to challenges in animal welfare and advocate for evidence-based practices that benefit animals and communities alike.

We have compiled a library of research Animals Fiji has been involved in along with veterinary research from Fiji. Visit our website for to view the [research library](#).



Heartworm Study for Fiji Dogs

Working with Dr. Peter Atkinson from The University of Adelaide, we are doing research on how effective SNAP-tests for heartworm in dogs actually work. These tests are handy but may not always be accurate. Instead of relying on imperfect standards, we are using a method called Bayesian analysis. We are testing 400 dogs to analyse out how effective these tests are at detecting heartworms. Our goal is to give accurate information about how common heartworm is in Fiji's dogs, help diagnose it better, and communicate widely the reliability of these tests.

Baseline Data Collection

As of 2021, there has been no baseline data until SPCA Fiji collated data dog population data in Suva and Animals Fiji collected data in Lautoka.

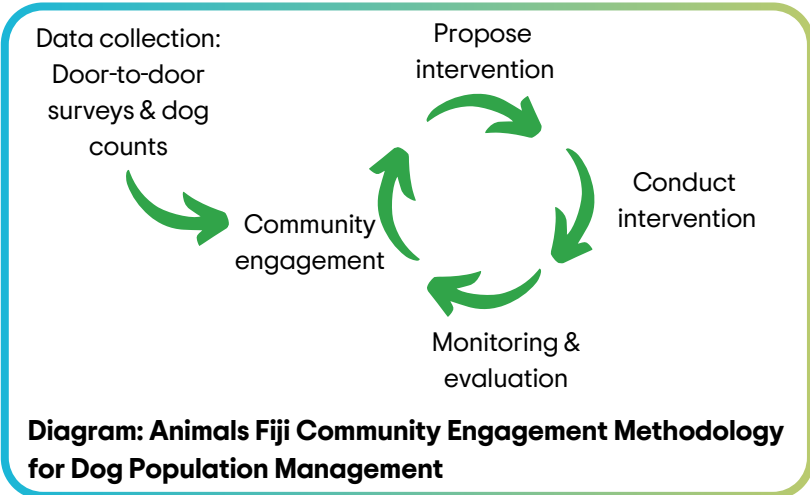
Tavakubu Dog Population Management

Making A Sustainable Impact In The Community

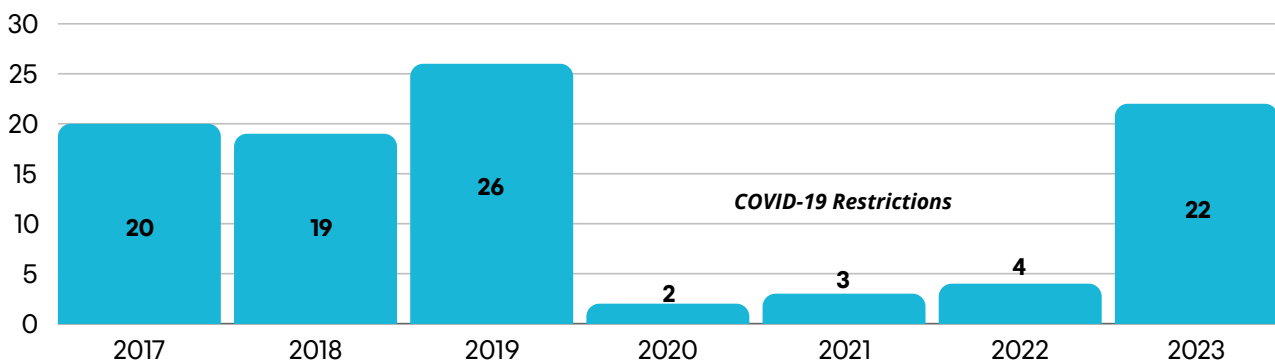
We set out to make an impact on the dog populations in Tavakubu Ward, Lautoka. Our team had collected data for weeks to attain a baseline number to then inform our intervention strategy. Over the course of six days we performed a sterilization intervention. Our goal is to spay and neuter 600 animals in the Tavakubu Ward to make an effective difference in the area. Through One-Health lens the positive impact will also be felt by the human community.

Working alongside our partners - Lautoka City Council and the Fiji Ministry of Agriculture and Waterways - we sterilised 211 animals. We subsidised 98% of the cost (minimum of FJ \$19,000) for these outreach services all for the sake of improving animal welfare.

Through data-driven interventions, we can increase our chances of obtaining grants and funding. With your support, we will continue to make a sustainable and long-term impact in the community.



Yearly number of outreach clinics



Saving sight (and life): A bulls eye enucleation

“Seeing” the impact of our work in Labasa, Vanua Levu, Fiji



This brave cow had been dealing with a tumor in its eye for over a year, and unfortunately, other treatments weren't providing the relief needed. The poor heifer endured the injury when a foreign object hit its eye, leading to this challenging situation.



However thanks to our skilled veterinarians and the dedication of our team, we were able to successfully remove and ligate the tumor, providing much-needed relief for this gentle creature.

Our community outreach missions are crucial to reaching animals in remote areas and providing the care they deserve. We're so grateful for your continued support, which enables us to make a difference in the lives of these animals.

This case costs Animals Fiji over FJ \$500 in medication alone, however we were able to subsidise it to an affordable price of FJ \$150 to the farmer.

Your donations make all the difference so we can continue to perform important work like this. Please consider donating here: www.animalsfiji.org/how-you-can-help/donate

Donors and Fundraisers



Big Impact, Small Gestures: Every Donation Makes a Positive Difference

Our hearts overflow with thanks to all the animal supporters, big and small, who help us in our mission to improve animal welfare in Fiji. From generous businesses to every individual donor, corporate groups, kids doing walking fundraisers, to families sharing their towels and collars - your kindness, in any form, is a helping hand to animals in need.

Every dollar, every bag of meat dust, every pair of gloves makes a difference to our team so we are able to help more animals. Thank you for believing in our mission and, with every contribution, helping us turn compassion into action. We are all doing this together to help Fijian animals and creating a better future.

For a full list of in-kind donations and supplies, please head to our website: www.animalsfiji.org/

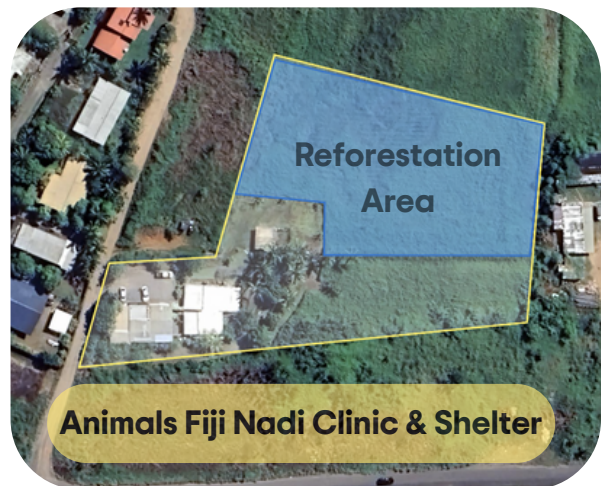
Reforestation Project

Restoring part of the one acre land at the Animals Fiji Nadi Clinic to its natural state as a Tropical Dry Forest.



What was once a one acre cane farm, prone to flooding, we are restoring land at the Animals Fiji Nadi Clinic to its natural state as a tropical dry rainforest.

The forest will serve as a rehabilitation area for animals where staff and volunteers can take animals on walks. The land will be reforested with native vegetation to prevent flooding at the Nadi Clinic, and include a lush garden and walkway for shelter tours and visits.



Worldwide Inspiration



2001



2019

The project aligns with the 30 Million Trees in 15 Years initiative by the Fijian Government by addressing the climate crisis and restoring biodiversity through native tree planting.

The project is being completed in collaboration of the Fiji Ministry of Forestry.

Our Progress So Far



Students from International School Nadi planting the first trees in October 2023



Native Fijian trees including Tavola, Passion Fruit, Vesi, and Damanu provided by the Ministry of Forestry



The Fiji Airways team making a difference planting over 70 trees on a hot day in December 2023

Private & Corporate Sponsorships



Partner with Animals Fiji to support your personal goals or corporate sustainability vision and raise awareness with the Fiji community



1. Reforestation Project: Back to a Tropical Dry Forest

- Help reforest the Nadi clinic land by planting native trees to make a sustainable impact
- Obtain naming rights for the forest and/or acknowledgement of contributions
- Great opportunity for team building or family day out



2. Puppy Bowl Sponsorship

- We published a [Puppy World Cup video](#) as a lead up to the 2023 Rugby World Cup
- The video raises awareness of animal welfare charities and adopting animals
- Provide sponsorship for future iterations
- Media and cameo opportunities



3. Group & Corporate Tours

- Showcase your commitment to ethical sustainability and environmental well-being through corporate social responsibility
- Spark your team's empathy, boost morale, and leave inspired to be animal welfare advocates
- Book an exclusive tour and let your impact speak for itself



4. Fundraising for Fiji's First Outreach Mobile Clinic

- Fundraise for an Animals Fiji Bus to provide outreach clinics in areas that lack access to basic veterinary care
- Create an individual or team fundraiser
- Personal or Corporate branding on the bus opportunity

Our Team



The faces of the people who give endlessly to improve animal welfare in Fiji

Board of Trustees

Provide strategic guidance, authorisation, and oversight to ensure we stay aligned to our mission.

Co-Founder & Managing Trustee

Leadership, operations management on a day-to-day basis, partnerships, and external representation.

Veterinary Medical Team

Qualified professionals providing medical care, treatment and surgeries for animals.

Clinic, Finance, Marketing, and Shelter Staff

Team of compassionate hands, watchful eyes, and vibrant voices fueling our daily operations.

Volunteers

From all over the world, our volunteers help do amazing work for the animals in Fiji.

Goldie Nugget & her continued battle



Goldie Statistics (as of 1 Jan 2024)

- ♥ 268 days in the Animals Fiji shelter
- ➔ Two working limbs
- 📖 \$12,000FJ+ spent on her recovery

Paralysed from a car accident and still waiting to be adopted

Goldie is a dog and once a beloved member of the Wailoaloa Beach community. She first came into our Nadi clinic to be spayed in March 2023. Unfortunately, at the start of April 2023, she was found on the side of the road, paralyzed, unable to use her back two legs as a result of being hit by a car.

Our team have worked tirelessly to get her back to her previous happy self.

Despite countless efforts to get her adopted overseas, she has remained in our care. Since she was initially admitted after being hit by a car on April 7th 2023, Goldie has costed us FJ \$12,000 (at a minimum). Here is a rough breakdown:

- Each night in our care for boarding, food and water: \$35 (269 nights as of 1 Jan 2024)
- Goldie tested positive for heartworm: \$1000 for all required medications, and check ups
- Plus costs associated with general check-ups, regular physiotherapy, and required labour.

We are grateful for the individuals who have helped cover the costs associated, including a year's worth of food for her. Goldie has also been gifted a new lightweight wheelchair that is customisable for her body frame.

However, we still need your support to find her a forever home. Support Goldie by donating at www.animalsfiji.org/ so we can do the best by her.



Looking Forward



Increasing Our Reach & Impact

Through a diverse approach, we aim to expand our reach. Firstly, we will offer more tours at our clinics. These visits will connect the public with our animals, showcase our work, and inspire advocates. Secondly, we will increase the amount of mobile outreach clinics, targeting areas where basic veterinary care is limited. This approach will bring essential services directly to vulnerable animals and communities, enhancing their access to veterinary healthcare. We will leverage the power of social media by sharing stories of animals finding homes or recovery. We will continue to recruit, develop, and retain a passionate team of like-minded individuals. By recruiting staff who align with our mission, we ensure a workforce that consistently pushes the boundaries of what's possible in advancing animal welfare in Fiji.



Large-Scale Impact

Beyond the walls of our clinics, we envision a future where animal welfare is front-of-mind for all Fijians. Going forward, we'll champion large-scale impact through:

- Championing legislative change to ensure animal laws reflect global standards of compassion.
- Continuing our reforestation project to restore part of the one acre land at the Animals Fiji Nadi Clinic to its natural state as a Tropical Dry Forest.
- Strengthen partnerships with government, tourism, and local organisations.
- Conduct and collaborate on research, both locally and global, to highlight the issues facing Fijian animals.
- Run various fundraisers to increase funding.



How You Can Help

GIVE

Donate in-kind www.animalsfiji.org

PAYPAL

www.paypal.me/animalsfiji

WESTPAC FIJI ACCOUNT:

Account Name: West Charity Trust Society
Bank Account: 9803624577
BSB: 039019
SWIFT CODE: WPACFJFX

AUSTRALIAN BANK DETAILS:

Bank: ANZ, Bank Address: Pitt Street, Sydney
Account Name: Animals Fiji Fundraising Account
Account #: 207111293
BSB: 012110

MPAISA:

Search for the business "Animals Fiji"

BSP FIJI ACCOUNT:

Account Name: West Charity Trust Society
Bank: Bank of South Pacific (BSP)
Bank Account: 8280636
BSB: 069017
SWIFT CODE: BOSPFJFJ

VENMO

www.venmo.com/u/animalsfiji

ADOPT

Give the gift of a second life by adopting one of the many dogs, cats, puppies or kittens at the Animals Fiji Nadi Clinic. Visit our website for information on [adopting](#).

FOSTER

Fostering a shelter animal is an incredibly rewarding experience and makes our shelter kittens, puppies, cats and dogs very happy. Visit our website for information on [fostering](#).

VOLUNTEER

Donate your time and skills by volunteering either in-person or remotely. Visit our website for information on [volunteering](#).

BUY

Buy our merchandise including t-shirts, hoodies, hats and more! Wear it and help Fiji animals. Browse our [merchandise store](#).

FUNDRAISE

Help raise awareness and funds for Animals Fiji by starting your own fundraiser.

SPONSOR

Sponsor a dog, cat, vet or a village visit. Visit our website for information on [sponsoring](#).

VISIT

Come behind-the-scenes to learn how we help animals in our tropical paradise. Visit our website for information on [tours](#).





Thank you Vinaka vaka levu Dhanyavaad



Nadi & Lautoka
(+679) 993-6647 or 998-2026



Postal Address
PO Box 11035, Nadi Airport, Fiji

Savusavu & Labasa
(+679) 998-6253



www.animalsfiji.org



info@animalsfiji.org



@animalsfiji

FIJI: Animals Fiji (operated by West Charity Trust Society), Fiji Charity Reg. # 889 / TIN # 60-34707-0-3.

USA: Animals Fiji - USA, 501 (c)(3) registration, EIN # 81-5449045.

AUSTRALIA: Animals Fiji, NSW Charitable Fundraising Authority, CFN/22572.

Platinum
Transparency
2024

Candid.

Animals Fiji is registered with **GuideStar**, the world's largest source of non-profit information:
<https://www.guidestar.org/profile/81-5449045>